

MARSHFIELD MUNICIPAL AIRPORT

George Harlow Field (KGHG)



-A Valuable Regional Asset-

Harlow Field is an important part of our interstate and intermodal transportation system and links southeastern Massachusetts to the nation and the world.

-AIRPORT HISTORY-

22 The Evening Gazette WORCESTER, MASS.

THURSDAY, JULY 7, 1949

PLANE TALK

Creates Airport On South Shore

By WALTER M. KEARNEY
Aviation Writer

It takes courage and hard work to carve an airport out of woods and fields—the kind of courage and hard work our forebears were noted for.

With these as his only assets and a dream of owning an airport in his back yard somewhere in Massachusetts but preferably along the South Shore, Joseph F. Ford, aided by his wife, Helen A. Ford, went about locating an airport site in a unique fashion.

"I bought topographical maps which show the lay of the land, roads and houses for the entire state," said Ford. I think now I know where every level piece of land in Massachusetts is located."

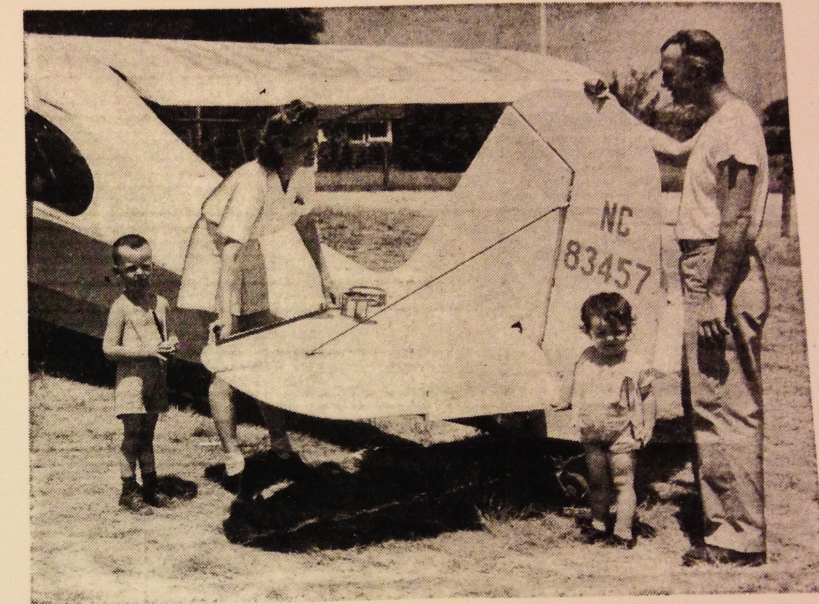
"Because I wanted an airport on the South Shore I started scouting this section first. After looking over about 15 sites I finally hit upon this one. It had everything."

"While he was looking," interjected Mrs. Ford, "I was in the hospital and couldn't help him much. Every night though I heard about the difficulties of finding a suitable spot. He was getting discouraged so it was a relief when I heard about this place. It seemed ideal to me, especially the house."

Located in Marshfield

There followed two years of sweat and hard work removing trees and leveling the land and then waiting for the grass to grow. Last Summer, part of their labors complete, Marshfield Airport only a mile from the beach was officially opened. The airport has a single sod runway east and west, 2500 feet long.

Facing the airport is the house where the Fords and their two children, Kenneth M., 5, and Barbara E., 2, live. The house, a beautiful example of Cape Cod style architecture, is 210 years



SUPERVISING WIFE'S REPAIR JOB

Joseph F. Ford, operator of the Marshfield Airport, supervises the repair job his wife, Helen A., is doing on the horizontal sta-

bilizer. Their two children, Kenneth M. and Barbara E., love the airport and airplanes.

old and was build by a brother of Governor Winslow. Mrs. Ford, besides helping her husband operate the airport, has re-decorated the inside.

I landed there Monday while out on an aerial photo assignment. We found Mrs. Ford helping her husband repair the fabric on the wing of a plane. While we were there she excused herself for a little while to make potato salad for supper.

Used to Soiled Hands

Some women knit or sew and that's all. Mrs. Ford can sew clothes for her family or stich

fabric on an airplane wing. "I'm just as used to having airplane dope on my hands now," she said, "as having them in flour."

Like the pioneers who settled this land 300 years ago, the Fords are pioneers in the field of aviation. Their faith in the future is a conviction. Already the airport has become the focal point for fliers seeking facilities close to the sea.

Wings Over Worcester

Another successful pilotage race this last weekend at Orange Airport was part of the airshow held there. The race was directed by George W. Truman of Hiller Airport and Charles Hamilton of Orange. The winners were Tom

fore taking over the directorship of the Lowell board.

He is married and father of three children.

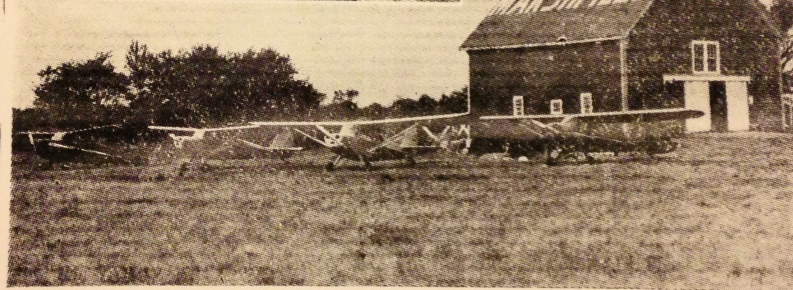
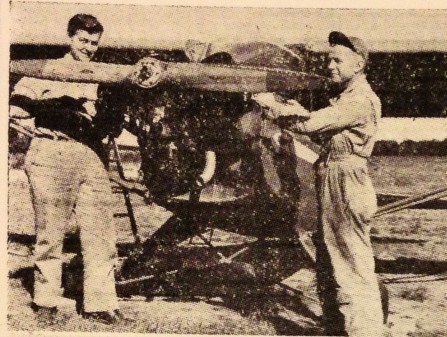
In three years as head of the Central Massachusetts board, Auslander represented 9000 workers in negotiations with some 40 employers, a union statement said.

With headquarters in Atlanta, Auslander will have the job of organizing textile workers, 75 to 80 per cent of whom have no union affiliation. He increased membership in Central Massachusetts by 3800.

-AIRPORT HISTORY-

PLYMOUTH, MASS., THURSDAY, NOVEMBER 18, 1948

Marshfield Vet Builds Own Airport



The Marshfield Airport, life's dream of a Marshfield Navy pilot, who constructed and operates the field of his own initiative, is shown above located off Route 139, about a mile west of Fieldston in that town. Insert, upper left shows Joe Ford, the proud owner (right) with his chief mechanic, Jack Stevenson of Arlington.

The life's dream of Joseph Ford of Marshfield, utility Navy pilot during World War II, has been realized with the opening of the Marshfield Airport, located on the Karl Property off Route 139 in that town.

When Joe came to Marshfield a year ago after his discharge from the U. S. Navy he purchased the large field with the intention of constructing an airport. In the summer and fall of 1947 Joe cleared over a half mile strip of

land about 600 or 700 feet wide. Future plans have been made for the construction of an additional runway. The entire project was formulated and developed by Joe himself and he has the unique distinction of having his airport in his own back yard.

Joe purchased four airplanes, three of them being Aeroncas and one a Piper Cruiser. The Aeroncas are used for flight instruction and the cruiser for carrying passengers.

At the present time Joe has about 30 pilot students in training and has received the full co-operation of the Marshfield Board of Selectmen and the Board of Trade in his project.

Joe took residence in Marshfield a year ago, coming from Somerville with his wife and two children after his Navy discharge.

He has been flying for about 15 years being a commercial pilot and flight instructor prior to his Navy service. During the war he

had additional duties as Engineering Officer, Flight Test and Utility Pilot in fighter and multi-engine aircraft with the Atlantic Fleet. He received his pilot training at Corpus Christi, Texas, and was a flight instructor at Squantum during the early part of the war. He served three years in the U. S. Navy and holds the American Defense Ribbon.



Marshfield Airport Circa 1949



Marshfield Airport Circa 1949





-AIRPORT HISTORY-

- Prior to 1965, the Marshfield Airport was a privately owned airfield, built by the Ford Family.
- At a Special Town Meeting in October, 1965, the residents of Marshfield voted by overwhelming majority to purchase the airport and adjacent land.
- The acquisition of these properties was consummated by eminent domain taking in 1967. Approximately 150 Acres, including a runway and 3 buildings, were purchased with \$30,000 in local funds combined with Federal and State Grants. The total cost of the acquisition was \$118,847.97

REASONS WHY THE TOWN ACQUIRED THE AIRPORT:

(TEXT TAKEN FROM THE ORIGINAL TOWN MEETING PRESENTATION)

- To provide another active income-producing business in town
- To provide an additional employment opportunity in town
- To provide another educational field in town leading toward several kinds of lucrative career opportunities
- To provide aviation transport facilities of a "general aviation" nature (i.e., other than airlines)
- To provide a feature of attraction to any industry which might become interested in locating in Marshfield
- To acquire town-owned land, which under the terms of purchase constitutes a very attractive investment on a long-term basis

NOTE:

WIND ROSE

NOTE:
INSUFFICIENT APPLICABLE WIND DATA AVAILABLE TO DEVELOP A WIND ROSE (SEE CHAPTER 3 OF THE 1975 MARSHFIELD MUNICIPAL AIRPORT MASTER PLAN FOR DETAILED ANALYSIS AND RECOMMENDATIONS).

NOTES:
1. ALL RADII FOR TAXIWAYS, TIEDOWNS, AND ETC ARE SHOWN IN DETAIL ON APPROPRIATE TERMINAL AREA PLAN.
2. FENCING AND SECURITY LIGHTING DETAILED ON TERMINAL AREA PLAN.
3. ALL AIRPORT LIGHTING SHOWN IS SCHEMATIC ONLY.

- NOTES:
1. ALL RADII FOR TAXIWAYS, TIEDOWNS, AND ETC. ARE SHOWN IN DETAIL ON APPROPRIATE TERMINAL AREA PLAN.
 2. FENCING AND SECURITY LIGHTING DETAILED ON TERMINAL AREA PLAN.
 3. ALL AIRPORT LIGHTING SHOWN IS SCHEMATIC ONLY.

Groundbreaking for new runway, 1968



1968 GROUND BREAKING FOR NEW RUNWAY
MARSHFIELD MUNICIPAL AIRPORT

HONORABLE GUESTS (FROM LEFT TO RIGHT)
ARNOLD STYMEST - AIRPORT MANAGER
JOE WALLIS - CHIEF ENGINEER, MASSACHUSETTS AERONAUTICAL COMMISSION
F. LEE BAILEY JR.
STEVE ANDERSON - CHAIRMAN, MARSHFIELD AIRPORT COMMISSION

Marshfield Airport Following Pavement of the Runway in 1969



Airport Terminal Renovation in 2001



- ▶ Total Project Cost was \$557,625
- ▶ 80% Funded by Grant from Mass. Aeronautics Commission
- ▶ \$80,000 of local share was voted by a significant majority at Town Meeting in 2001
- ▶ Project updated Town-owned building to ADA Compliance, updated to current code, new HVAC, larger lobby, new restrooms, pilot briefing area and public meeting space
- ▶ Shoreline contributed approximately \$45,000 in additional funds towards landscaping, terminal furnishings, equipment, etc.

Summary of Recently Completed Runway Safety Improvement Project:



- ▶ **New pavement on Runway and Taxiways, Runway Extended to 3900 x 100, Including New Safety Areas**
- ▶ **Increased separation between Runway and Taxiways**
- ▶ **New lighting systems including a Precision Approach Path Indicator Light System (PAPI) on the Runway 24 approach end**
- ▶ **Clearing of obstacles (trees) in approach zones**
- ▶ **New Instrument Approaches, including LPV**

Safety Improvement Project 2014

**15+ years of TEAMWORK, COLLABORATION, and PERSEVERANCE
resulted in a SAFER AIRPORT for the flying public and the community!**



Marshfield Airport 2015

Following completion of 2014 Runway
Safety Improvement Project.



Marshfield Airport 2018

Focused on safety. Focused on community. Focused on economic development. Focused on a being a good steward of the environment. Focused on a bright future.

GHG Based 135 Charter Fleet



GA & Business Aviation Ops at KGHG



Marshfield Airport 2018

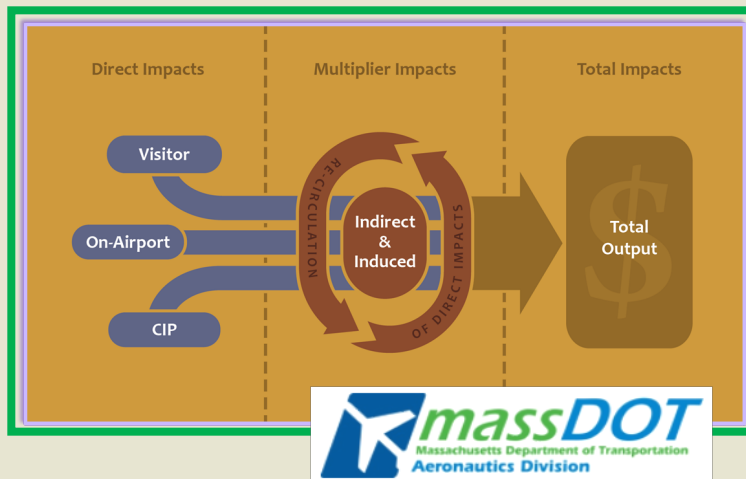
Focused on safety. Focused on community. Focused on economic development.
Focused on a being a good steward of the environment. Focused on a bright future.



NE Aquarium Turtle
Rescue Flights out
of KGHG

Marshfield Airport has significant impacts on the area economy

- ▶ Marshfield Airport, its employees, users, and visitors patronize many local businesses. The airport is a vital source of tourism business for Marshfield restaurants, inns, taxi and limousine services, car rental agencies, shops and vendors of all kinds. Many local enterprises receive a significant amount of revenue from airport related activities. We market our community to area pilots and encourage them to enjoy all that our seaside town has to offer.
- ▶ Many local businesses own, rent and charter aircraft to get them to parts of the state and country not serviced by commercial airlines, which gives them a competitive edge. Even local fisherman utilize the aircraft from Marshfield for fish-spotting activities. Proximity to a general aviation airport is often a major factor for companies and executives selecting a site for a new office or headquarters.
- ▶ Throughout the country, 166 million passengers per year fly on General Aviation Aircraft.

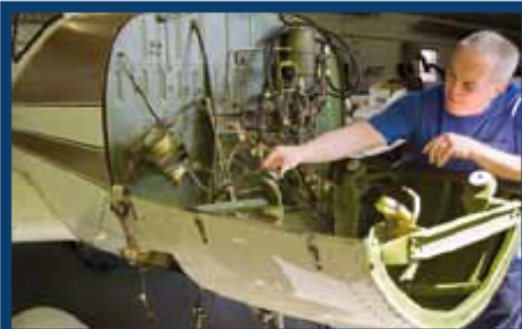


MassDOT/Aeronautics 2013 Economic Impact Study Results: Marshfield Airport Supported Approximately:

- **74 Jobs (total on and off airport)**
- **\$3,627,000 in Annual Payrolls**
- **\$9,154,000 Million Total Regional Economic Activity Per Year**

MASSACHUSETTS AIRPORTS ARE VITAL ECONOMIC ENGINES AND ALSO SERVE THE PUBLIC IN MANY OTHER WAYS

TOTAL ECONOMIC IMPACTS OF MASSACHUSETTS' PUBLIC-USE AIRPORTS



Total Jobs
124,369



Total Payroll
\$4.9 billion

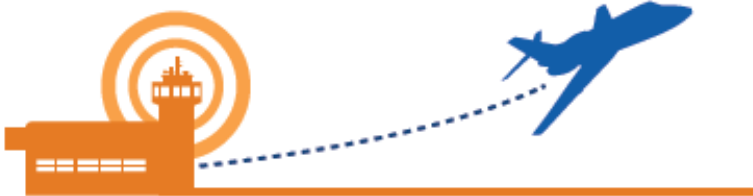


Total Economic Activity
\$11.9 billion

Aviation boosts local economies and creates new markets at home and abroad. From the business trips and vacations we take, to the products and services we enjoy, aviation makes it all happen.

—Federal Aviation Administration

Business Aviation



Business airplanes can reach about 5,000 airports; the airlines only reach 500

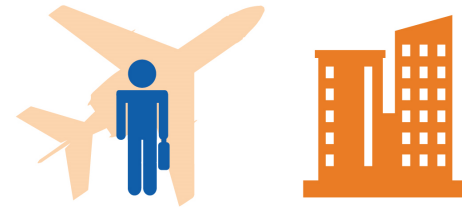


80% of business airplane flights are into airports in small towns and communities

38% of business aviation missions involve multiple destinations



55% of companies using business aviation have <500 employees



Among Fortune magazine's "World's Most Admired Companies,"

 **95%** are business aircraft users



BUSINESS AVIATION
HELPS SUPPORT
1.1 million jobs

GHG is a training center and provider of skilled job opportunities

- ▶ Many of Marshfield's high school students have held part time jobs, trained and received their pilot's license or mechanic's license at the Marshfield Airport. Marshfield can be proud that many of these young people have gone on to have successful careers as Airline Executives, Military Pilots, Aerospace Engineers, Airline Pilots, Flight Instructors, Corporate Pilots, Airport Managers, Aviation Technicians, because their career was given a jump start at the Marshfield Airport.
- ▶ The airport provides highly-skilled job opportunities. A number of Marshfield and South Shore residents are employed as pilots, managers, aviation technicians, refuelers, groundskeepers and managers.



Recruitment Starts Early!



Airport staff routinely host tours of the airport for elementary and secondary school classes, scouts, brownies and other youth groups. Staff members also participate in career days at local schools.

Our Motto is: Crawl, Walk, Fly!

Teaching young people that the sky is the limit....



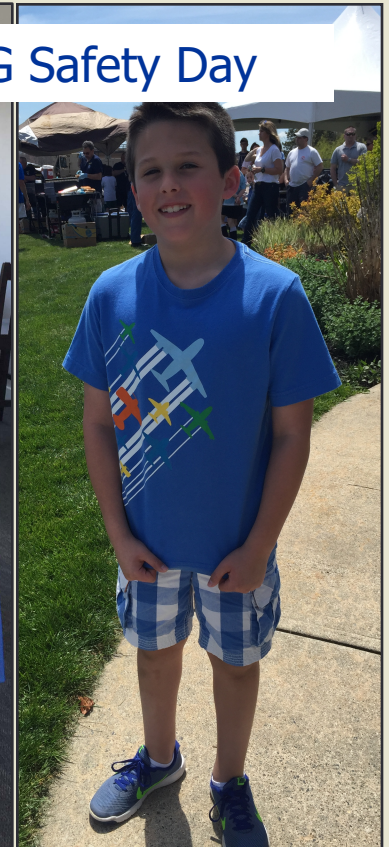
Flat Stanley's Adventures
out of KGHG



GHG Safety Day



GHG Young Eagles Day



There are a number of young students training at Marshfield Airport. Many started lessons at the age of eleven. They started dreaming of learning to fly when they were even younger! A GHG student recently soloed on his 16th Birthday and is planning a career in aviation!



- ➔ GHG serves an important role in Public Safety and Law Enforcement. The U.S. Coast Guard, State Police, National Guard, and other local agencies fly out of GHG to facilitate search and rescue operations, fire patrol, life-saving emergency medical transport and organ transport, federal and local law enforcement activities, wildlife and environmental monitoring flights.
- ➔ In close coordination with public safety and law enforcement agencies, the Marshfield Airport is a vital component of the region's emergency management and response infrastructure.

Emergency Medical Flights and Compassion Flights. Your Airport is here for you when you or a loved one need it most....



- ▶ The Airport provides a base for emergency medical flights, transporting serious emergencies to hospitals in Boston and elsewhere, 24/7/365.
- ▶ Through organizations like Angel Flight Northeast, and Patient Airlift Service, free assistance is provided to families in need for non-emergency medical transport. Pilots out of Marshfield Airport donate their aircraft, all expenses and their time to transport pediatric and adult patients to specialized medical facilities for life saving treatments.



MARSHFIELD REGIONAL SAFETY DAY 2018



Saturday
October 13, 2018
10am - 1pm

Marshfield Airport KGHG
93 Old Colony Lane
Marshfield, MA



Safety plays an important role in our everyday lives whether on land, in the air, or at sea. This event will showcase some of the equipment, agencies, and personnel that work 24/7 to keep us safe and assist us when needed.

YOUR SAFETY IS NO ACCIDENT!

THIS FREE PUBLIC SAFETY EVENT WILL INCLUDE:

- Child Fingerprinting
- Interactive Safety Training
- EVERSOURCE Wire Safety Demo
- Aircraft Static Displays
- Boat Static Displays
- Flight Simulator
- Emergency Preparedness Equipment & Training
- K-9 Demonstrations
- Land/Sea/Air Safety Equipment Displays
- Safety Demos by Government, Law Enforcement, Public Safety, and Military Personnel
- Free Food and Refreshments Provided by Marshfield Kiwanis

EVENT SPONSORS



Sutton James an OFFICIAL AIA member
Aviation Insurance Brokers



Regional Safety Day at GHG

In collaboration with the Marshfield Harbormaster, GHG hosts a Regional Safety Day. Thousands of attendees have been able to meet with and see live demonstrations from over 30 public safety and law enforcement agencies.





INTEGRATION IS THE KEY

Airports must showcase their value to the public.

**TEAMWORK, MULTI-AGENCY COORDINATION and
THINKING OUTSIDE THE BOX
foster valuable relationships.**

A Few Examples:

- ▶ Volunteer pilots participated in the search and rescue mission for missing boater and the airport provided 24/7 fueling support to Coast Guard and State Police assets involved in the search.
- ▶ Shoreline Aviation provided an aircraft to fly the Marshfield Police during a search for the suspect in a stabbing murder. The suspect was located in a shed and the police believe he did not flee because of the air support circling overhead. State Police assets were not available to assist for several hours.
- ▶ The airport assisted the Coast Guard and Army Guard with an operation to change the generator at Boston Light
- ▶ The airport assisted the Army with a late night anti-terrorist training exercise involving three Blackhawk helicopters.
- ▶ The airport installed an aviation radio on the Town's rapid response harbormaster vessel to facilitate communications during rescue ops, identifying Great White sharks, and security situations.

Visitors Welcome!
Come watch the planes on a beautiful day!



There's always something to see at KGHG!



Marshfield's Municipal Airport is a Valuable Regional Asset

- ▶ The very reasons that Town Residents voted to acquire the Airport in 1965 have stood the test of time. If anything, the airport has contributed far more to the region, particularly in the area of emergency management and economic impacts, than was ever anticipated.
- ▶ Marshfield Airport is part of our interstate/ intermodal transportation system and links our Town to the nation and the world. We are proud of the contributions we make to the economy and emergency resources of our region. We are also proud of the many bright futures that launch from KGHG!

Marshfield's George D. Harlow Field

The Airport is named after George D. Harlow, who served on the Airport Commission from 1964 until he passed away in 2009. George, along with the rest of the original Airport Commission, had tremendous foresight and a vision that has stood the test of time. If anything, the airport has contributed far more than they ever imagined, particularly with respect to economic benefits and support of public safety and law enforcement activities. George served continuously on the Airport Commission for forty-five years and worked on the plans for the safety improvement project until his passing in 2009. He purchased his first brand new aircraft, an Aviat Husky, in his 70s. He is sorely missed.





We appreciate the support of the teams at FAA and MassDOT Aeronautics. We have one of the safest aviation systems in the world because of your efforts.

THANK YOU!

